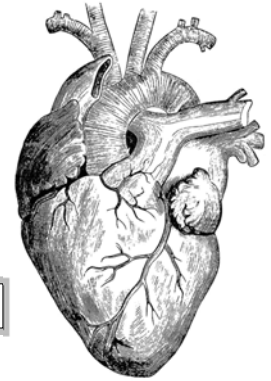


The Human Heart Crossword



1 VEINS 2 S

3 B

4 PURKINJE 5 CARDIAC CYCLE

6 A

7 R

8 L

9 R

10 CHORDA ETENDINEA

11 T

12 E

13 A

14 A

15 MYOCARDIUM

16 S

17 PULSE

18 PERICARDIUM

19 S

20 O

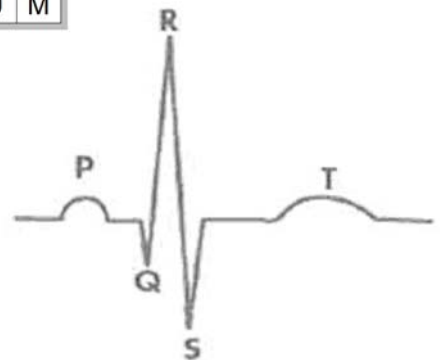
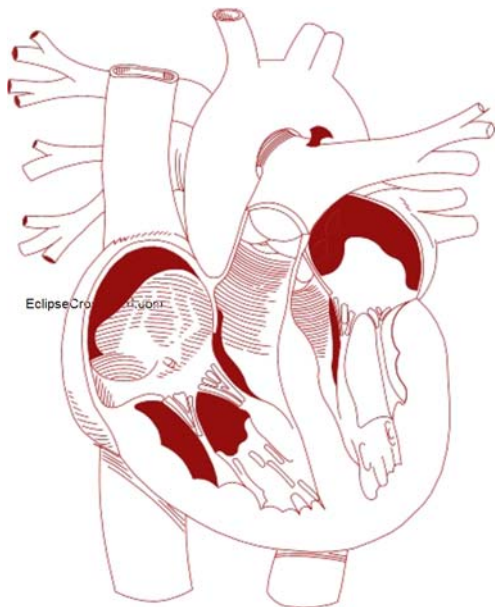
21 S

22 ARTERIES

23 DIASTOLE

24 LEFT ATRIUM

VEINS
PURKINJE
CARDIAC CYCLE
A
R
L
CHORDA ETENDINEA
T
A
A
MYOCARDIUM
S
PULSE
PERICARDIUM
S
O
S
ARTERIES
DIASTOLE
LEFT ATRIUM



Across

1. **VEINS**—The pulmonary _____ carry blood from the lungs to the heart.
4. **PURKINJE**—These fibers receive an electrical signal from the AV node through the AV bundle and cause the ventricles to contract.
5. **CARDIACCYCLE**—Each heartbeat is called a _____ (2 words).
10. **CHORDAETENDINEAE**—These are referred to as our "heart strings" and help keep the AV valves closed (2 words).
15. **MYOCARDIUM**—Name for cardiac muscle tissue
16. **SEMILUNAR**—There are two of these valves: the aortic and pulmonary.
17. **PULSE**—Describes the wave effect that passes down the walls of arteries when the aorta expands then recoils with each ventricular contraction.
18. **PERICARDIUM**—The heart is found within this thick, serous membrane that secretes a lubricating fluid
22. **ARTERIES**—The pulmonary _____ carry blood to the lungs for oxygen.
23. **DIASTOLE**—Refers to the relaxation of heart muscle
24. **LEFTATRIUM**—Chamber that collects blood returning from the lungs (2 words).

Down

1. **VENOUSDUCT**—Connects the umbilical vein to the inferior vena cava in a fetus.
2. **SEPTUM**—Muscular wall of tissue that separates the two halves of the heart
3. **BICUSPID**—The atrioventricular _____ valve separates the left atrium and left ventricle.
6. **ATRIOVENTRICULAR**—This node is found on the wall of the right atrium and is responsible for signaling the ventricles to contract.
7. **RIGHTVENTRICLE**—Chamber that sends blood to the lungs (2 words).
8. **LEFTVENTRICLE**—Very muscular chamber that sends blood to the body (2 words).
9. **RIGHTATRIUM**—Chamber collects blood returning from the body (2 words).
11. **TRICUSPID**—The atrioventricular _____ valve separates the right atrium and right ventricle.
12. **ELECTROCARDIOGRAM**—A recording of the changes that occur in the myocardium during a cardiac cycle (P-QRS-T)
13. **ATERIALDUCT**—Found in fetal hearts only, this is an opening between the pulmonary artery and aorta (2 words).
14. **AUTONOMIC**—The _____ nervous system is responsible for modifying heart rate.
19. **SINOATRIAL**—This node is known as our natural "pacemaker" and is responsible for signaling the atria to contract.
20. **OVALOPENING**—Connects the right and left atrium to allow blood to bypass the lungs in fetal circulation (2 words).
21. **SYSTOLE**—Refers to the contraction of heart muscle.