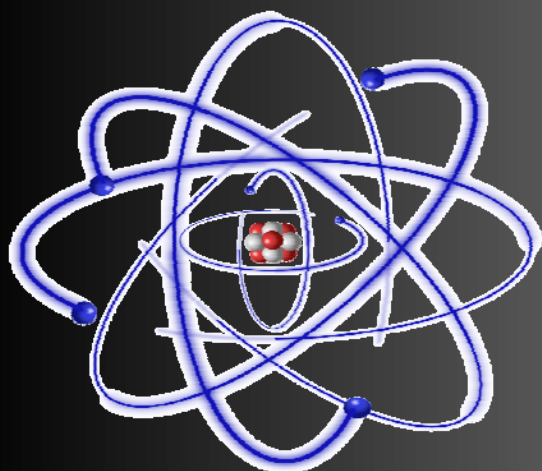


Human Organization

Chapter 8 Biology 12



philipmarin.com

Types of Tissues

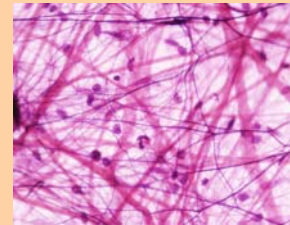
Epithelial

Covers body surfaces & lines
body cavities



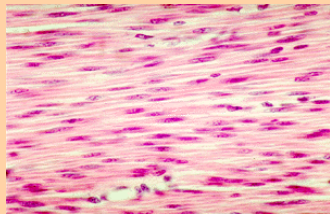
Connective

Binds & supports body parts



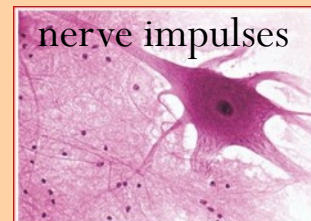
Muscular

Moves the body & its parts

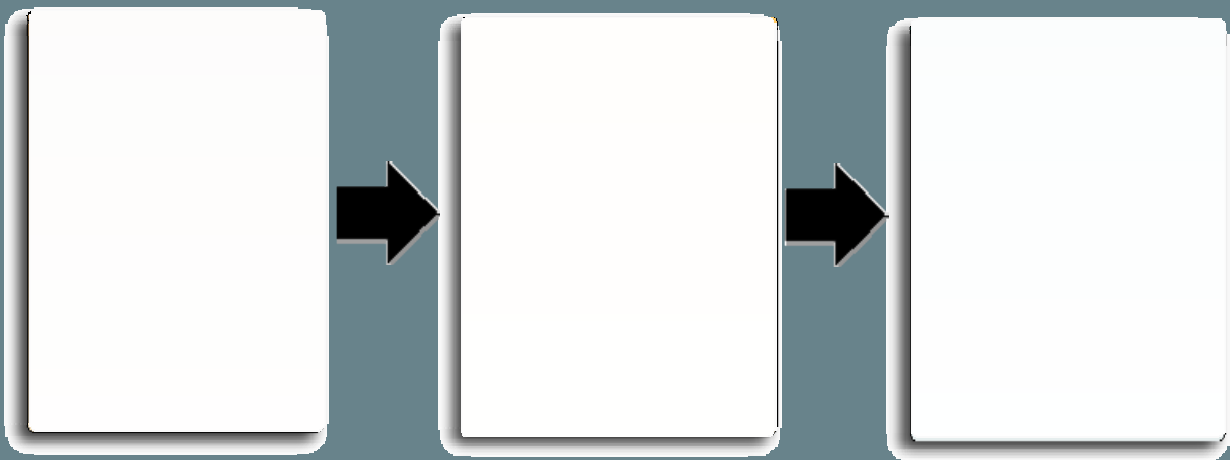


Nervous

Receives stimuli and conducts

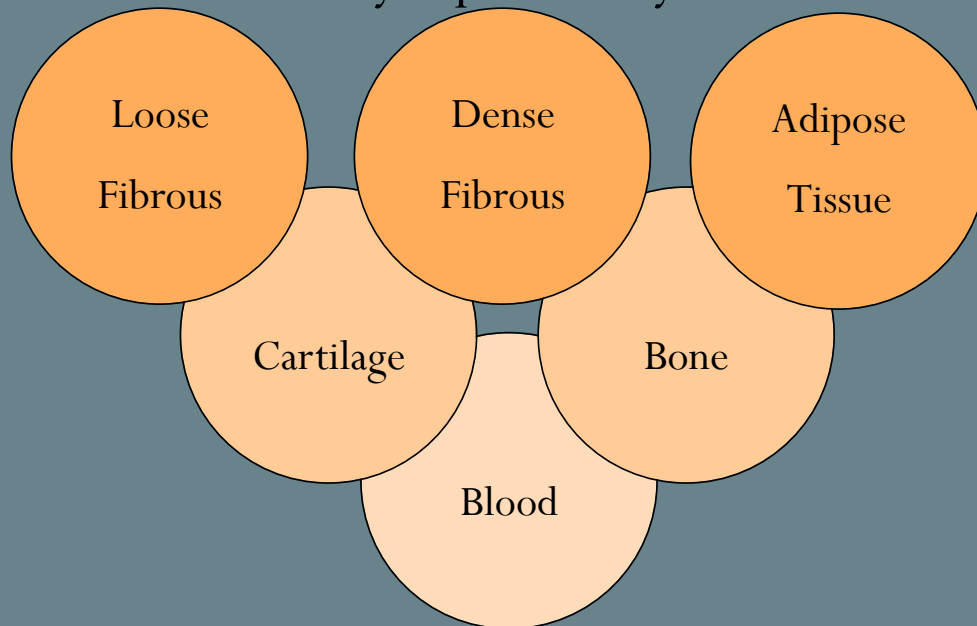


Epithelial Tissue



Connective Tissue

Cells widely separated by a **matrix**



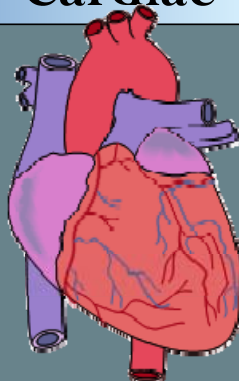
Muscular Tissue

Muscle fibers contain **actin** & **myosin** filaments

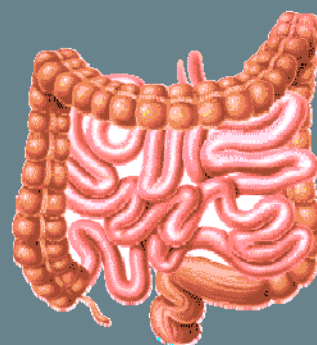
Skeletal



Cardiac



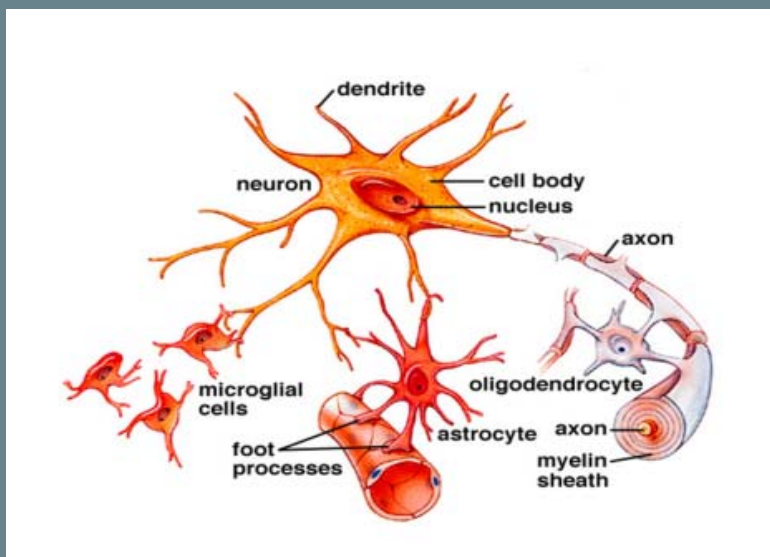
Smooth



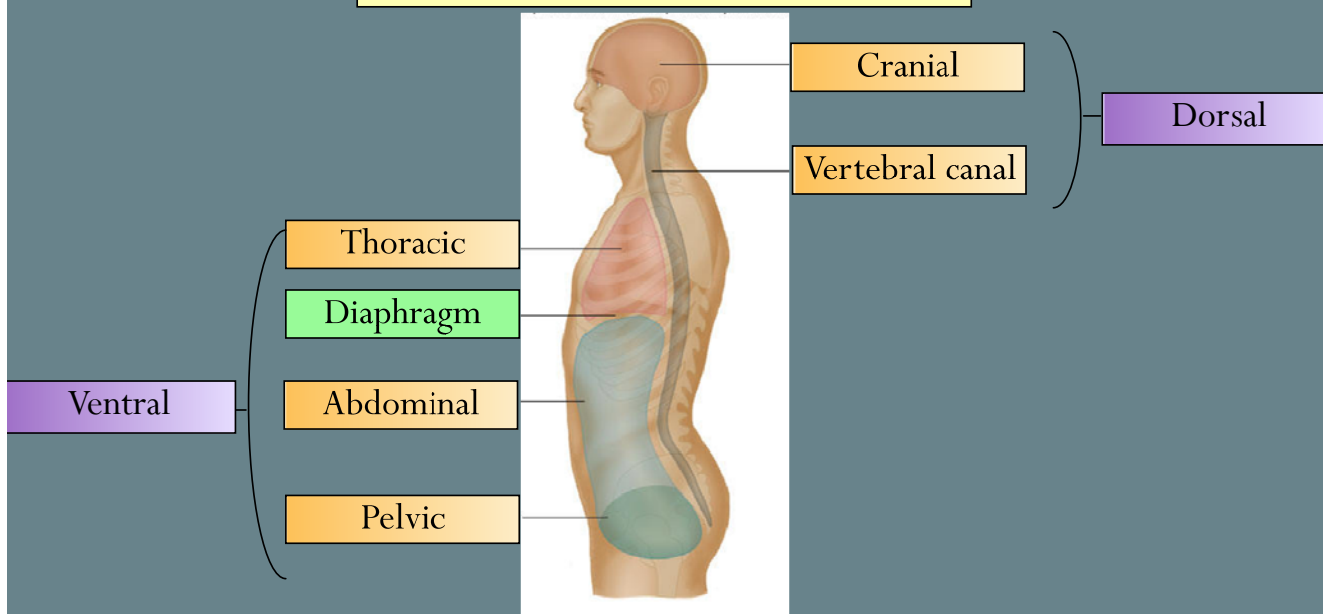
Nervous Tissue

Neurons

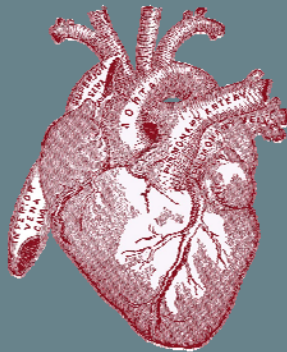
Neuroglia



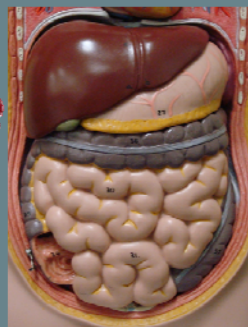
Body Cavities



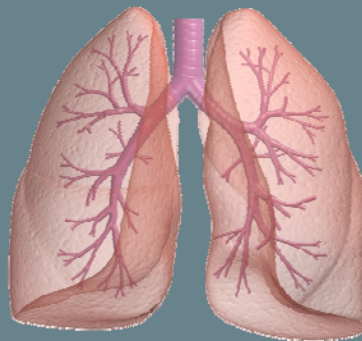
Body Membranes



Pericardium



Peritoneum

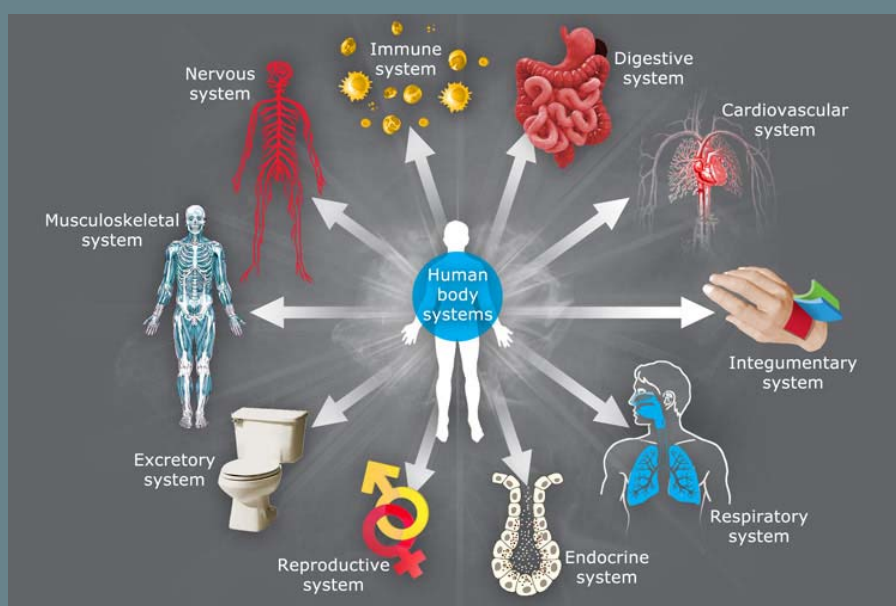


Pleurae



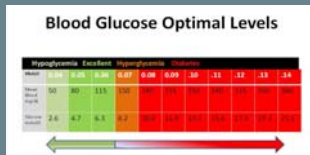
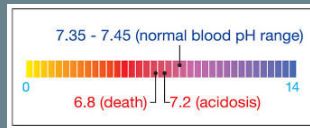
Meninges

Organ Systems



Homeostasis

Maintaining an internal equilibrium

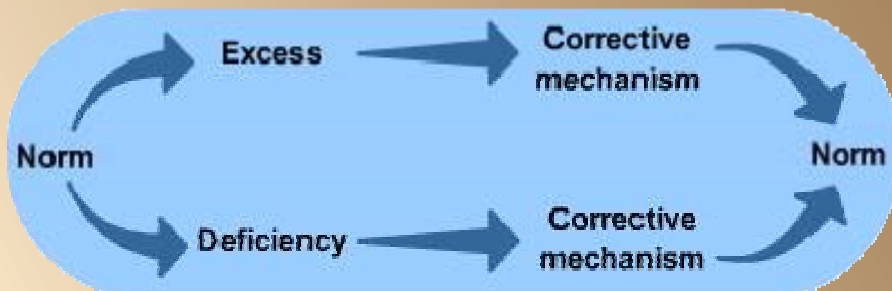


Two possible types of "feedback" systems

Keeps a variable close to a **set point**

- **sensor:** detects change
- **control** center: directs response

Negative



Positive

- * Brings about an ever greater change in the same direction.
- * Normally exist only when there is a definite end point to a process
- * Examples:
 - blood clotting
 - childbirth

