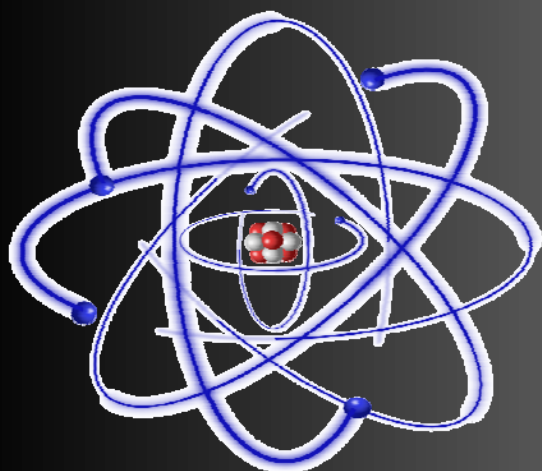


# Human Organization

## Chapter 8 Biology 12



philipmarin.com

## Types of Tissues

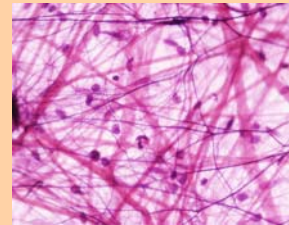
### Epithelial

Covers body surfaces & lines  
body cavities



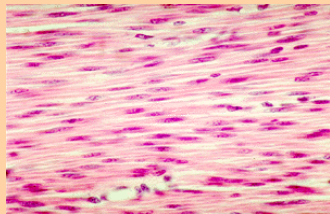
### Connective

Binds & supports body parts



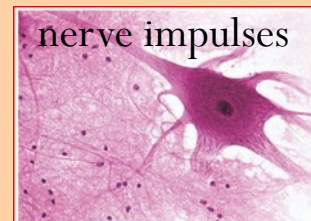
### Muscular

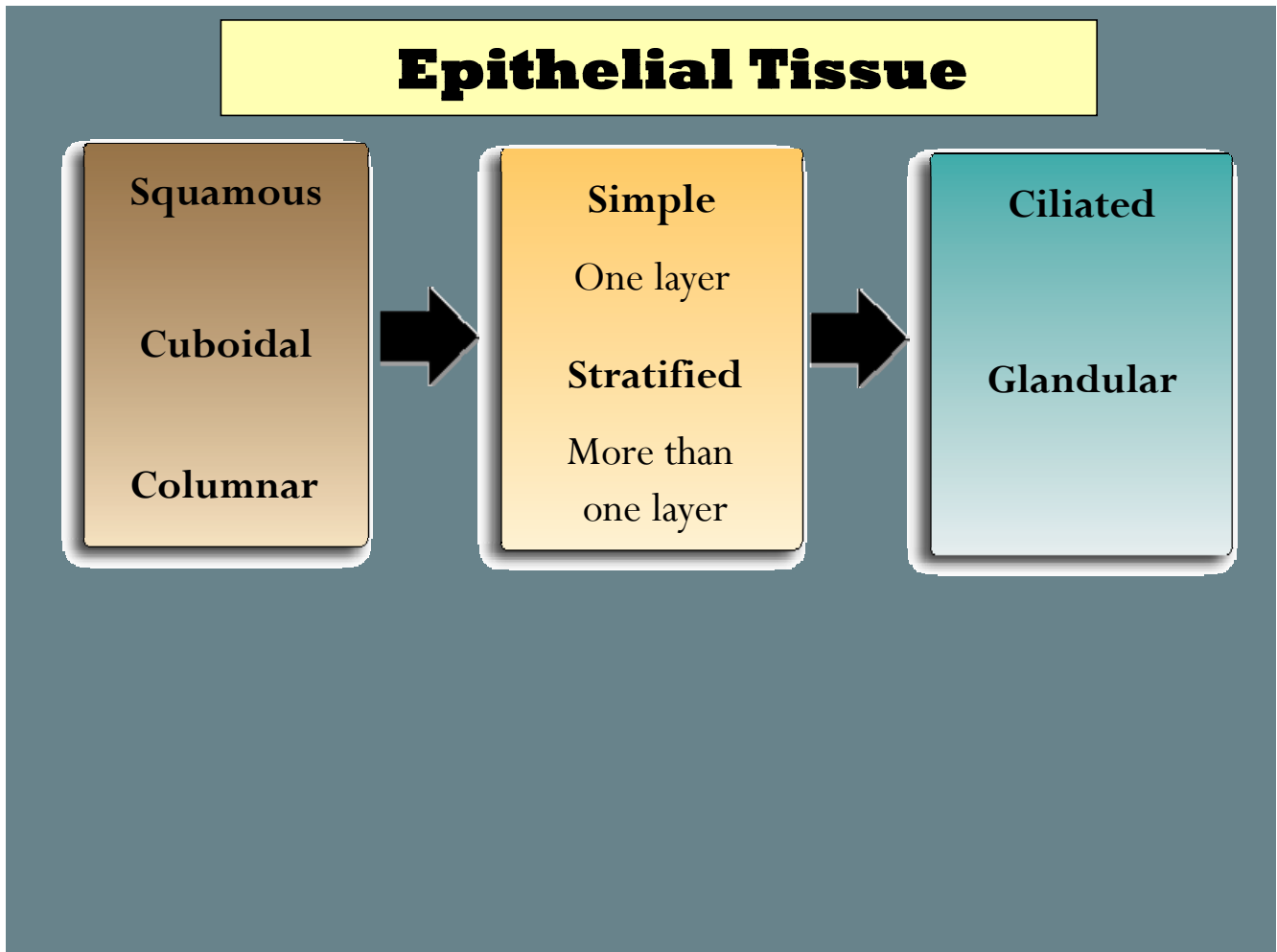
Moves the body & its parts



### Nervous

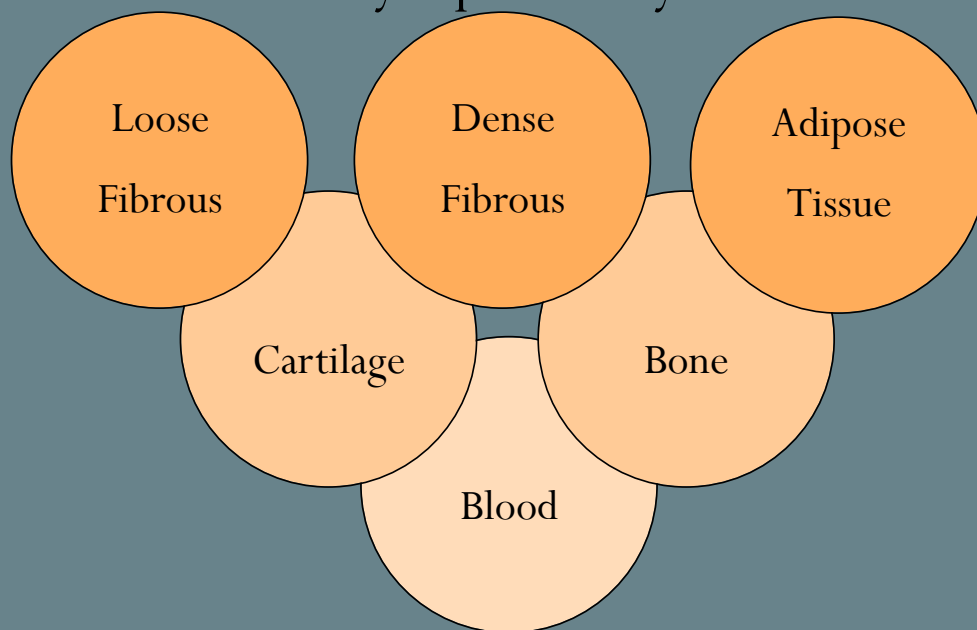
Receives stimuli and conducts





## Connective Tissue

Cells widely separated by a **matrix**



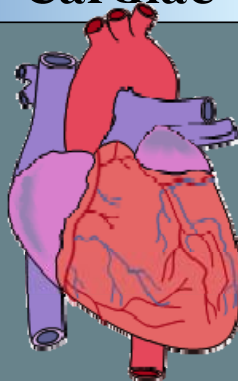
## Muscular Tissue

Muscle fibers contain **actin** & **myosin** filaments

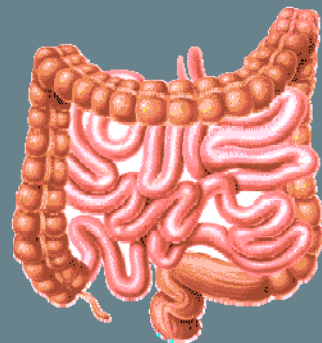
Skeletal



Cardiac



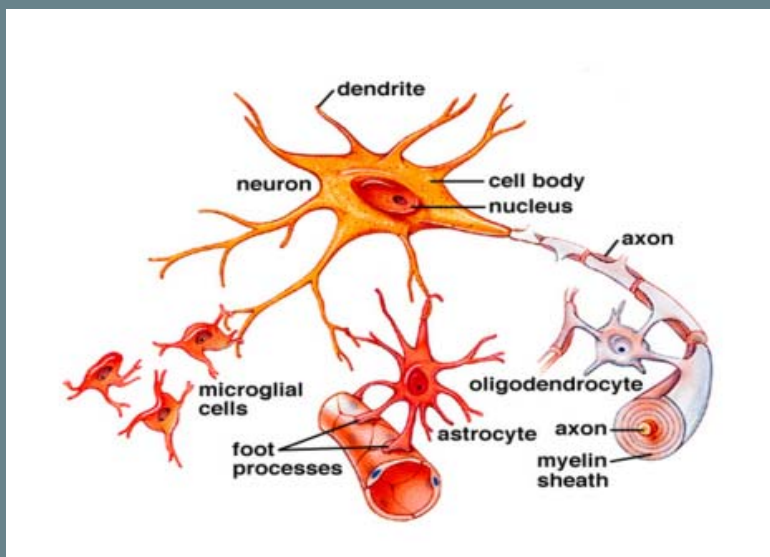
Smooth



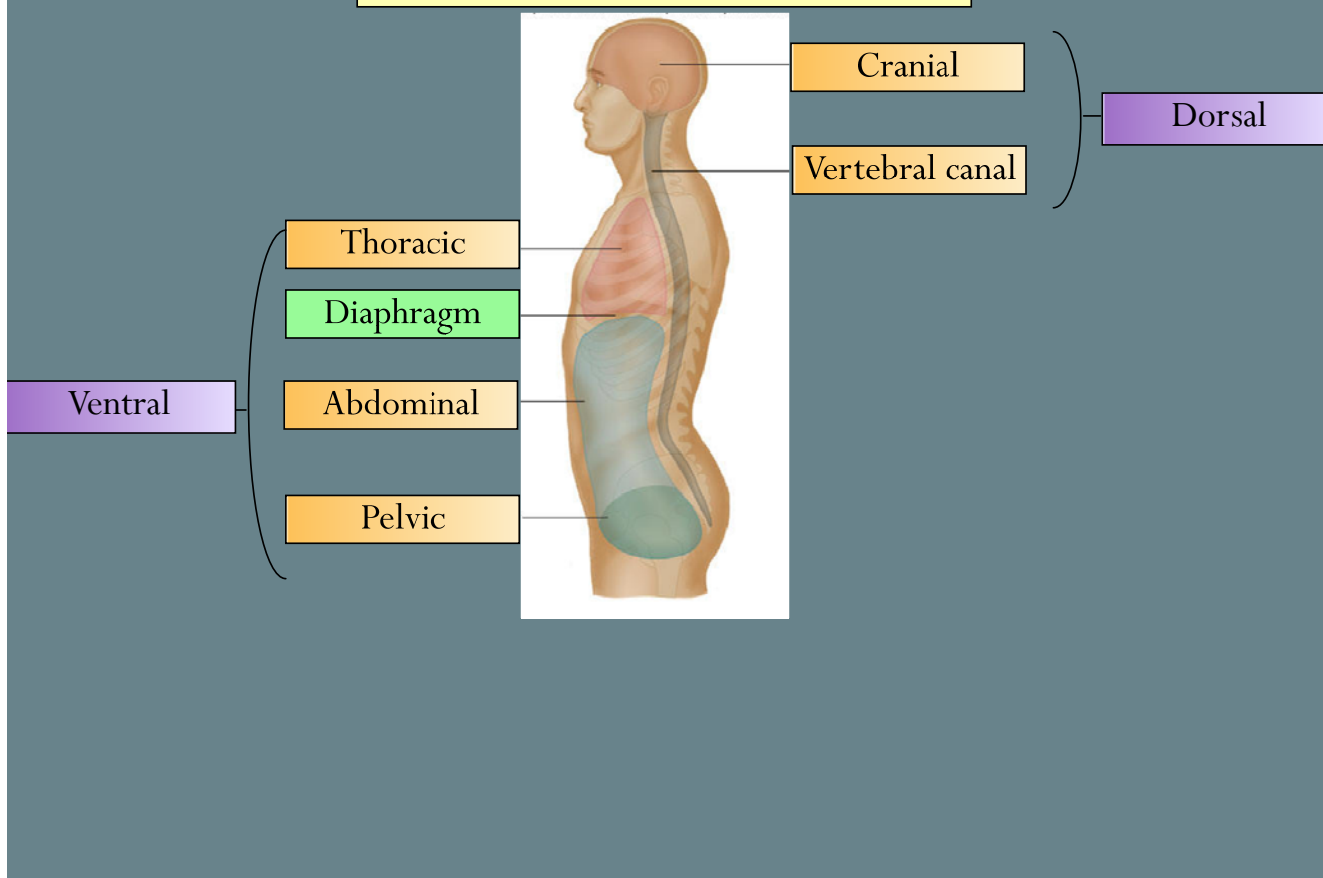
# Nervous Tissue

Neurons

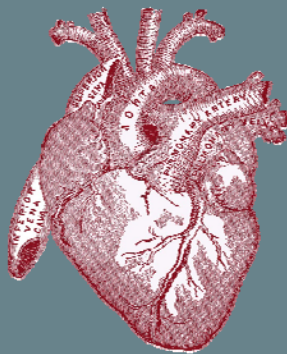
Neuroglia



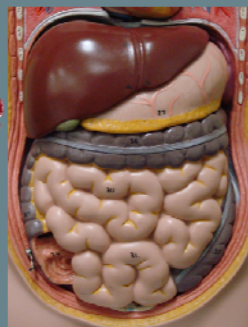
# Body Cavities



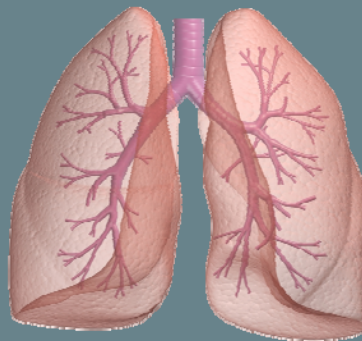
## Body Membranes



Pericardium



Peritoneum



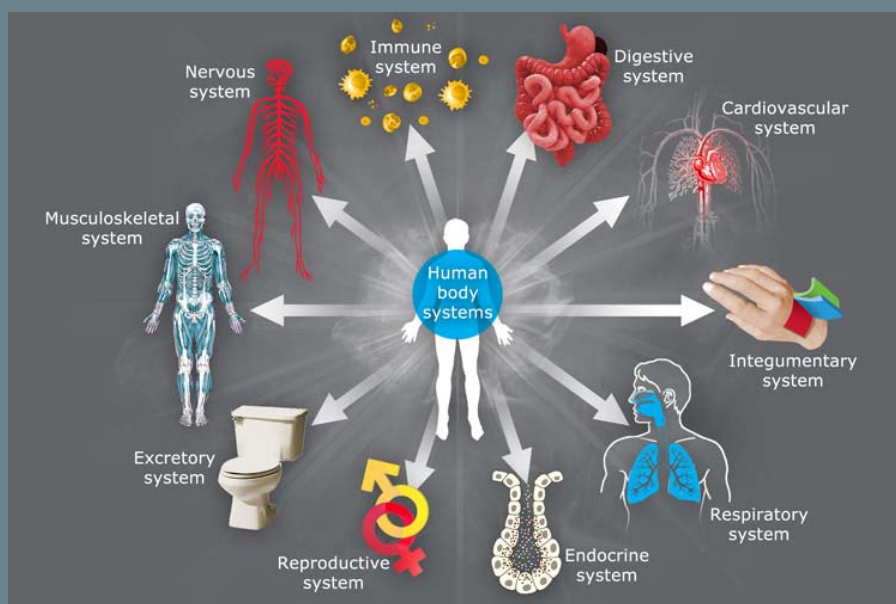
Pleurae



Meninges

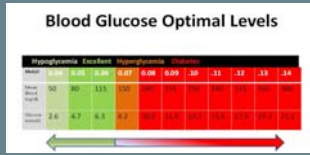
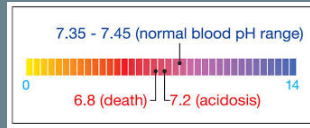


# Organ Systems



# Homeostasis

Maintaining an internal equilibrium

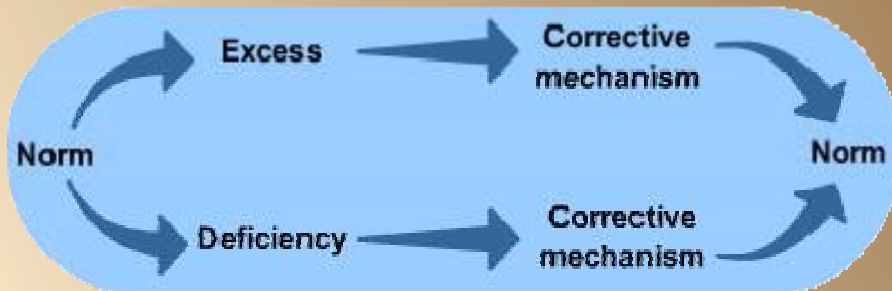


Two possible types of "feedback" systems

Keeps a variable close to a **set point**

- **sensor:** detects change
- **control** center: directs response

Negative



Positive

- \* Brings about an ever greater change in the same direction.
- \* Normally exist only when there is a definite end point to a process
- \* Examples:
  - blood clotting
  - childbirth

