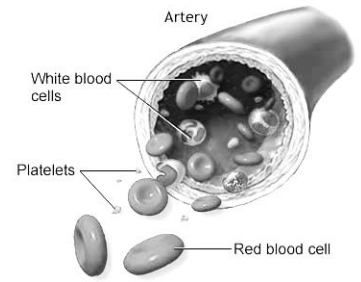


### Blood and Blood Vessels Crossword



1 H Y P E R T E N S I O N

2 U L

3 S

4 V

5 C A P I L L A R I E S

6 H I M P H A T I C

7 H E M O G L O B I N

8 J U G U L A R

9 T H R

10 M E C T R

11 I L I A C

12 E

13 S P H Y G M O M A N O M E T E R

14 L M

15 V E N U L E S

16 A O R T A

17 V A L V E

18 A R T E R I E S

19 R E N A L

20 C O R O N A R Y

21 V E N A C A V A

22 A R T E R I E S

23 S

24 B L O O D P R E S S U R E

25 H

26 A N T I B O D I E S

27 H Y P O T E N S I O N

28 S Y S T E M I C

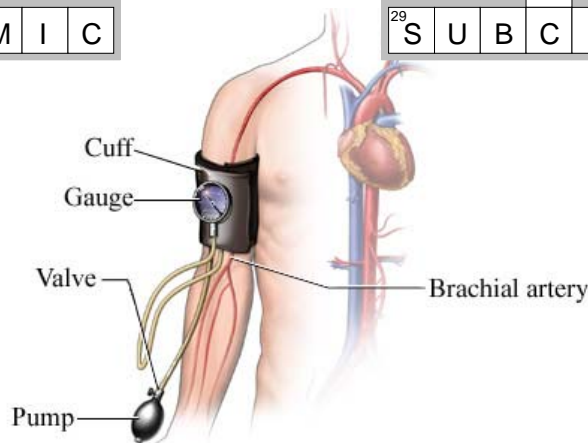
29 S U B C L A V I A N

Y T H R O C Y

R T

S

EclipseCrossword.com



## Across

---

1. **HYPERTENSION**—Term for high blood pressure.
5. **CAPILLARIES**—Thin walled blood vessels that are the site of nutrient and gas exchange between the blood and tissue fluid.
7. **HEMOGLOBIN**—Found only in red blood cells, this carries oxygen and carbon dioxide.
11. **ILIAC**—This term refers to the vessels that divide in the pelvic region and begin heading to the legs.
13. **SPHYGMOMANOMETER**—Device used to measure blood pressure.
15. **VENULES**—Drain blood out of the capillaries and combine to form veins.
16. **AORTA**—The largest artery in the body.
19. **RENAL**—The \_\_\_\_\_ artery and vein take blood to the kidneys then back to the heart.
20. **CORONARY**—These arteries and veins are responsible for supplying the heart tissue with blood.
21. **VENACAVA**—The superior and inferior \_\_\_\_\_ return blood from the upper and lower body to the right atrium (2 words).
22. **ARTERIES**—Category of blood vessels that carry blood away from the heart.
24. **BLOODPRESSURE**—Usually measured using the brachial artery in the arm, a normal reading is 120/80.
26. **ANTIBODIES**—Produced by lymphocytes in response to an "invader" in the body.
27. **HYPOTENSION**—Term for low blood pressure.
28. **SYSTEMIC**—The left side of the heart is responsible for the \_\_\_\_\_ circuit.
29. **SUBCLAVIAN**—The \_\_\_\_\_ arteries and veins take blood to and from the arms.

## Down

---

2. **PULMONARY**—The right side of the heart is responsible for the \_\_\_\_\_ circuit.
3. **SPHINCTER**—The muscles found in the arterioles that can regulate the flow of blood through a capillary bed.
4. **VEINS**—Category of blood vessels responsible for returning blood to the heart.
6. **LYMPHATIC**—The \_\_\_\_\_ capillaries collect excess tissue fluid.
8. **JUGULAR**—This major vein returns blood from the head to the heart.
9. **THROMBOCYTES**—Scientific name for platelets.
10. **MESENTERIC**—This artery takes blood to the digestive system.
12. **LEUKOCYTES**—Scientific name for white blood cells.
14. **PLASMA**—Composed mainly of water, provides the fluid component to blood.
17. **VALVES**—These are found only in veins and prevent blood from flowing backwards
18. **ARTERIOLE**—Blood vessels responsible for controlling the flow of blood leading to the capillaries.
20. **CAROTID**—This major artery runs up the side of your neck to your head.
23. **ERYTHROCYTES**—Scientific name for red blood cells.
25. **HEPATIC**—This word refers to the vessels that interact with the liver.